

REC TWINPEAK SERIES

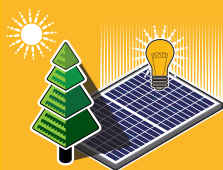
PREMIUM SOLAR PANELS WITH SUPERIOR PERFORMANCE

REC TwinPeak Series solar panels feature an innovative design with high panel efficiency and power output, enabling customers to get the most out of the space used for the installation.

Combined with industry-leading product quality and the reliability of a strong and established European brand, REC TwinPeak panels are ideal for residential and commercial rooftops worldwide.



**MORE POWER
OUTPUT PER M²**



**IMPROVED PERFORMANCE
IN SHADED CONDITIONS**



**100%
PID FREE**



**REDUCES BALANCE OF
SYSTEM COSTS**

REC TWINPEAK SERIES



ELECTRICAL DATA @ STC	REC265TP	REC270TP	REC275TP	REC280TP	REC285TP
Nominal Power - P _{MPP} (Wp)	265	270	275	280	285
Watt Class Sorting - (W)	0/+5	0/+5	0/+5	0/+5	0/+5
Nominal Power Voltage - V _{MPP} (V)	31.1	31.2	31.4	31.9	32.1
Nominal Power Current - I _{MPP} (A)	8.53	8.66	8.76	8.78	8.90
Open Circuit Voltage - V _{OC} (V)	38.3	38.6	38.8	39.2	39.5
Short Circuit Current - I _{SC} (A)	9.21	9.29	9.40	9.44	9.54
Panel Efficiency (%)	16.1	16.4	16.7	17.0	17.3

Values at standard test conditions STC (airmass AM1.5, irradiance 1000 W/m², cell temperature 25°C).
At low irradiance of 200 W/m² (AM1.5 and cell temperature 25°C) at least 94% of the STC module efficiency will be achieved.
Product code is followed by the suffix BLK for black framed modules.

ELECTRICAL DATA @ NOCT	REC265TP	REC270TP	REC275TP	REC280TP	REC285TP
Nominal Power - P_{MPP} (Wp)	195	198	202	205	209
Nominal Power Voltage - V_{MPP} (V)	28.8	28.9	29.0	29.5	29.6
Nominal Power Current - I_{MPP} (A)	6.77	6.87	6.95	6.97	7.06
Open Circuit Voltage - V_{OC} (V)	35.2	35.5	35.7	36.1	36.3
Short Circuit Current - I_{SC} (A)	7.32	7.38	7.47	7.50	7.58

Nominal operating cell temperature NOCT (800 W/m², AM 1.5, windspeed 1 m/s, ambient temperature 20°C).
Product code is followed by the suffix BLK for black framed modules.

CERTIFICATIONS



IEC 61215, IEC 61730 & UL 1703. IEC 62804 (PID Free),
IEC 61701 (Salt Mist Level 6), IEC 62716 (Ammonia Resistance),
ISO 11925-2 (Ignitability Class E), UNI 8457/9174 (Class A),
ISO 9001:2015, ISO 14001, OHSAS 18001



WARRANTY

10 year product warranty
25 year linear power output warranty
(max. degradation in performance of 0.7% p.a.)
See warranty conditions for further details.

See warranty conditions for further details.

17.3% EFFICIENCY

EFFICIENCY

10 YEAR PRODUCT WARRANTY

YEAR PRODUCT WARRANTY

25 YEAR LINEAR POWER OUTPUT WARRANTY

YEAR LINEAR POWER OUTPUT WARRANTY

TEMPERATURE RATINGS

Nominal operating cell temperature (NOCT) 44.6°C (±2°C)

Temperature coefficient of P_{MDD} $-0.39\%/^{\circ}\text{C}$

Temperature coefficient of V_{oc} $-0.31\%/^{\circ}\text{C}$

Temperature coefficient of I_{SC} 0.045 %/°C

GENERAL DATA

Cell type: 120 RECHC multi-crystalline
6 strings of 20 cells (156 x 78 mm)

Glass: 3.2 mm solar glass with anti-reflective surface treatment

Back sheet: Highly resistant polyester

Frame: Anodized aluminum*
*Available in silver or black

Junction box: 3-part with bypass diodes
IP67 rated

Connectors: Multi-Contact MC4 (4 mm²)

Connectors: Multi-Contact MC4 (4 mm²)

MAXIMUM RATINGS

Operational temperature: -40...+85°C

Maximum system voltage: 1000 V

Maximum snow load: 550 kg/m² (5400 Pa)

Maximum wind load: 244 kg/m² (2400 Pa)

Max series fuse rating: 25 A

Max reverse current: 25 A

MECHANICAL DATA

Dimensions: 1665 x 991 x 38 mm

Area: 1.65 m^2

Weight: 18 kg

Note! Specifications subject to change without notice.

Celebrating its 20th anniversary in 2016, REC is a leading European brand of solar panels. Through integrated manufacturing from polysilicon to wafers, cells, panels and turnkey solar solutions, REC strives to help meet the world's growing energy needs. Founded in 1996, REC is a Bluestar Elkem company with headquarters in Norway and operational headquarters in Singapore. REC concluded 2015 with 2000 employees worldwide, 1.3 GW solar panel production capacity, and annual revenues of USD 755 million.



www.recgroup.com